



**Biomatik**

Tel: (519) 489-7195, (800) 836-8089

Fax: (519) 231-0140, (877) 221-3515

Email: [info@biomatik.com](mailto:info@biomatik.com)

<http://www.biomatik.com>

**RPU51130**

**Recombinant Interleukin 10 (IL10)**

**Organism Species: Homo sapiens (Human)**

***Instruction manual***

FOR IN VITRO USE AND RESEARCH USE ONLY  
NOT FOR USE IN CLINICAL DIAGNOSTIC PROCEDURES

---

---

12th Edition (Revised in Aug, 2016)



**Biomatik**  
Tel: (519) 489-7195, (800) 836-8089  
Fax: (519) 231-0140, (877) 221-3515  
Email: [info@biomatik.com](mailto:info@biomatik.com)  
<http://www.biomatik.com>

## **[ PROPERTIES ]**

**Source:** Prokaryotic expression.

**Host:** *E. coli*

**Residues:** Met1~Asn178

**Tags:** N-terminal His-Tag

**Tissue Specificity:** Blood.

**Subcellular Location:** Secreted.

**Purity:** >92%

**Traits:** Freeze-dried powder

**Buffer formulation:** PBS, pH7.4, containing 1mM DTT, 5% trehalose, 0.01% sarcosyl and Proclin300.

**Original Concentration:** 200ug/mL

**Applications:** SDS-PAGE; WB; ELISA; IP; CoIP; Purification; Amine Reactive Labeling.

(May be suitable for use in other assays to be determined by the end user.)

**Predicted isoelectric point:** 8.3

**Predicted Molecular Mass:** 24.2kDa

**Accurate Molecular Mass:** 24kDa as determined by SDS-PAGE reducing conditions.

## **[ USAGE ]**

Reconstitute in PBS (pH7.4) to a concentration of 0.1-1.0 mg/mL. Do not vortex.

## **[ STORAGE AND STABILITY ]**

**Storage:** Avoid repeated freeze/thaw cycles.

Store at 2-8°C for one month.

Aliquot and store at -80°C for 12 months.

**Stability Test:** The thermal stability is described by the loss rate. The loss rate was determined by accelerated thermal degradation test, that is, incubate the protein at 37°C for 48h, and no obvious degradation and precipitation were observed. The loss rate is less than 5% within the expiration date under appropriate storage condition.

## [ SEQUENCE ]

MHSSALLCCL VLLTGVRASP GQGTQSENSC THFPGNLPNM LRDLRDAFSR  
VKTFQMKDQ LDNLLLKESL LEDFKGYLGC QALSEMIQFY LEEVMPQAEN  
QDPDIKAHVN SLGENLKTLLR LRLRRCHRFL PCENKSKAVE QVKNAFNKLQ  
EKGIYKAMSE FDIFINYIEA YMTMKIRN

## [ IDENTIFICATION ]

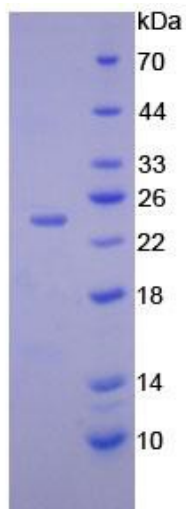


Figure 1. SDS-PAGE