



**RPU41495**

**Recombinant Filaggrin (FLG)**

**Organism Species: *Mus musculus* (Mouse)**

***Instruction manual***

FOR RESEARCH USE ONLY

NOT FOR USE IN CLINICAL DIAGNOSTIC PROCEDURES

---

12th Edition (Revised in Aug, 2016)

## **[ PROPERTIES ]**

**Source:** Prokaryotic expression

**Host:** *E.coli*

**Residues:** Asp119~Tyr336

**Tags:** N-terminal His and GST Tag

**Subcellular Location:** Secreted

**Purity:** > 85%

**Traits:** Freeze-dried powder

**Buffer formulation:** 20mM Tris, 150mM NaCl, pH8.0, containing 0.01% SKL, 5% Trehalose.

**Original Concentration:** 300µg/mL

**Applications:** Positive Control; Immunogen; SDS-PAGE; WB.

(May be suitable for use in other assays to be determined by the end user.)

**Predicted isoelectric point:** 6.7

**Predicted Molecular Mass:** 53.7kDa

**Accurate Molecular Mass:** 54kDa as determined by SDS-PAGE reducing conditions.

## **[ USAGE ]**

Reconstitute in 20mM Tris, 150mM NaCl (pH8.0) to a concentration of 0.1-1.0 mg/mL. Do not vortex.

## **[ STORAGE AND STABILITY ]**

**Storage:** Avoid repeated freeze/thaw cycles.

Store at 2-8°C for one month.

Aliquot and store at -80°C for 12 months.

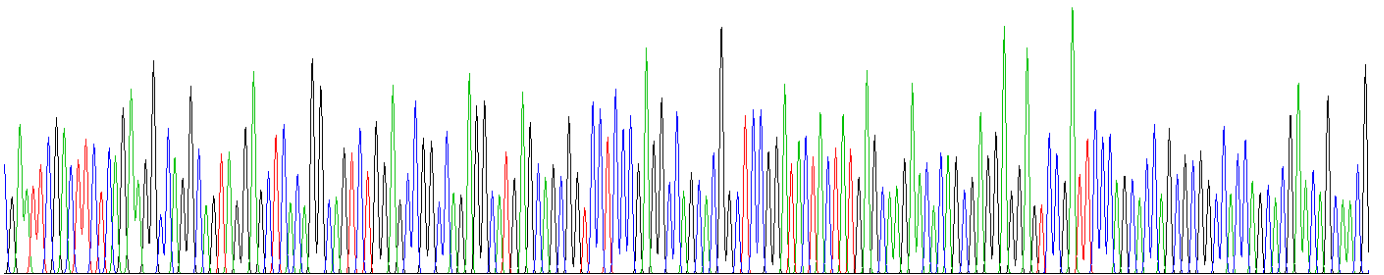
**Stability Test:** The thermal stability is described by the loss rate. The loss rate was determined by accelerated thermal degradation test, that is, incubate the protein at 37°C for 48h, and no obvious degradation and precipitation were observed. The loss rate is less than 5% within the expiration date under appropriate storage condition.

## **[ SEQUENCE ]**

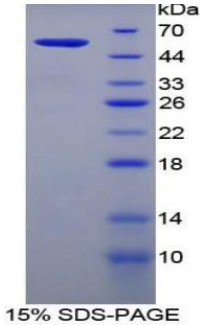
DF SEGQAVGAHR QSGAGQRHEQ RSSRGQHGSG  
 YYYEQEHSEE ESDSQHQHGH QHEQQRGHQH QHQHQHEHEQ PESGHRQQQS  
 SGRGHQGAHQ EQGRDSARPR GSNQGHSSSR HQADSPRVSA RSGSGGRGQS  
 PDASGRSSNR RDRPRQPSPS QSSDSQVHSG VQVEAQRGQS SSANRRAGSS  
 SGSGVQGAAA SGQGGYESIF TAKHLDFNQS HSYYYY

**[ IDENTIFICATION ]**

:GAA TTC A CT T CT C A G A A G C C A G C A G T A G G A G C T C A C A G G C A G T C T G G A G C C G C C A G A G C A T G A G C A G C G G T C C T C C G A G G C A G C A G C G G T C C G G A T A C T A T G A G C A A G A A C A C A G C G A G G A G G A G T C C G A T T C C C A G C A C C A G C G C G G C C A C A G C A G A A C A G C A A C G



**Figure . Gene Sequencing (extract)**



**[ IMPORTANT NOTE ]**

The kit is designed for research use only, we will not be responsible for any issue if the kit was used in clinical diagnostic or any other procedures.