



**Biomatik**  
Tel: (519) 489-7195, (800) 836-8089  
Fax: (519) 231-0140, (877) 221-3515  
Email: [info@biomatik.com](mailto:info@biomatik.com)  
<http://www.biomatik.com>

**CAU29394 Rat**  
**Monoclonal Antibody to Interleukin 33 (IL33)**  
**Organism Species: *Rattus norvegicus* (Rat)**  
***Instruction manual***

FOR RESEARCH USE ONLY  
NOT FOR USE IN CLINICAL DIAGNOSTIC PROCEDURES

---

12th Edition (Revised in Aug, 2016)

## **[ PROPERTIES ]**

**Source:** Monoclonal antibody preparation

**Host:** Mouse

**Antibody isotype:** IgG2a Kappa

**Purification:** Protein A + Protein G affinity chromatography

**Clone number:** 2#

**Traits:** Liquid

**Concentration:** 1mg/ml

**UOM:** 50µg(50µl)

**Applications:** WB; IHC; ICC; IP.

## **[ IMMUNOGEN ]**

**Immunogen:** Recombinant IL33 (Ile110~Leu261 (Accession # Q66H70)) expressed in *E.coli*

**Accession No.:** RPB980Ra01

## **[ APPLICATIONS ]**

Western blotting: 0.5-2µg/mL;1:500-2000

Immunohistochemistry: 5-20µg/mL;1:50-200

Immunocytochemistry: 5-20µg/mL;1:50-200

Optimal working dilutions must be determined by end user.

## **[ FORMULATION ]**

**Form & Buffer:** Supplied as solution form in PBS, pH7.4, containing 0.02% NaN<sub>3</sub>, 50% glycerol.

## **[ STORAGE AND STABILITY ]**

**Storage:** Avoid repeated freeze/thaw cycles.

Store at 4°C for frequent use.

Aliquot and store at -20°C for 12 months.

**Stability Test:** The thermal stability is described by the loss rate. The loss rate was determined by accelerated thermal degradation test, that is, incubate the protein at 37°C for 48h, and no

obvious degradation and precipitation were observed. The loss rate is less than 5% within the expiration date under appropriate storage condition.

### [ IDENTIFICATION ]

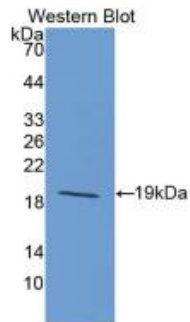


Figure. Western Blot; Sample:  
Recombinant IL33, Rat.

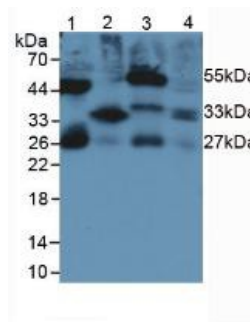


Figure. Western Blot; Sample: Lane1:  
Rat Serum; Lane2: Rat Lung Tissue;  
Lane3: Rat Intestine Tissue; Lane4: Rat  
Large Intestine Tissue.

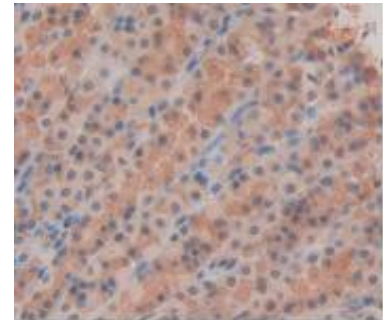


Figure. DAB staining on IHC-P;  
Samples: Rat Stomach Tissue.

### [ IMPORTANT NOTE ]

The kit is designed for research use only, we will not be responsible for any issue if the kit was used in clinical diagnostic or any other procedures.