

anti- SERPINB2 antibody

Product Information

Catalog No.:	CAF50319
Size:	100µg
Form:	liquid
Purification:	Immunogen affinity purified
Purity:	≥95% as determined by SDS-PAGE
Host:	Rabbit
Clonality:	polyclonal
Clone ID:	None
IsoType:	IgG
Storage:	PBS with 0.02% sodium azide and 50% glycerol pH 7.3, -20°C for 12 months (Avoid repeated freeze / thaw cycles.)

Background

Inhibits urokinase-type plasminogen activator. The monocyte derived PAI-2 is distinct from the endothelial cell-derived PAI-1.

Immunogen information

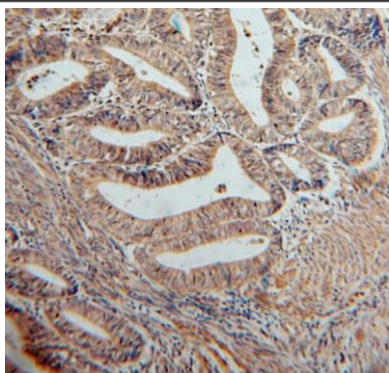
Immunogen:	serpin peptidase inhibitor, clade B(ovalbumin), member 2
Synonyms:	PAI2, PLANH2
Observed MW:	45-47 kDa
Uniprot ID :	P05120

Application

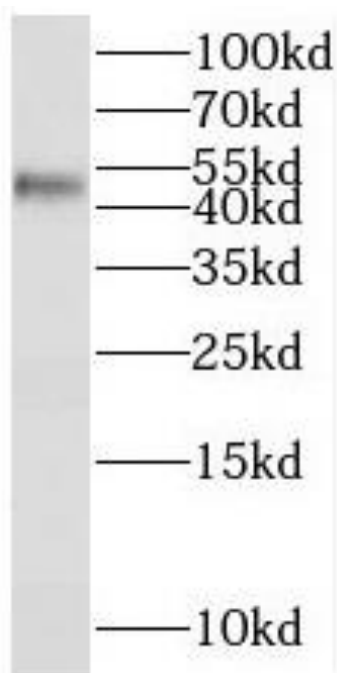
Reactivity:	Human
Tested Application:	ELISA, WB, IHC
Recommended dilution:	WB: 1:500-1:2000; IHC: 1:20-1:200
Image:	

This Antibody is for Research Use Only. Not for Diagnostic Procedures.

This is a sample Antibody manual only. Always refer to the hard copy manual included in the Antibody for your experiment.



Immunohistochemistry of paraffin-embedded human endometrial cancer using CAF50319(SERPINB2 antibody) at dilution of 1:50



Jurkat cells were subjected to SDS PAGE followed by western blot with CAF50319(SERPINB2 antibody) at dilution of 1:400

ONLY

SAMPLE

This Antibody is for Research Use Only. Not for Diagnostic Procedures.

This is a sample Antibody manual only. Always refer to the hard copy manual included in the Antibody for your experiment.