

anti- IHH antibody

Product Information

Catalog No.:	CAF50172
Size:	100µg
Form:	liquid
Purification:	Immunogen affinity purified
Purity:	≥95% as determined by SDS-PAGE
Host:	Rabbit
Clonality:	polyclonal
Clone ID:	None
IsoType:	IgG
Storage:	PBS with 0.02% sodium azide and 50% glycerol pH 7.3, -20°C for 12 months (Avoid repeated freeze / thaw cycles.)

Background

Intercellular signal essential for a variety of patterning events during development. Binds to the patched(PTC) receptor, which functions in association with smoothened(SMO), to activate the transcription of target genes. Implicated in endochondral ossification: may regulate the balance between growth and ossification of the developing bones. Induces the expression of parathyroid hormone-related protein(PTHrP)(By similarity).

Immunogen information

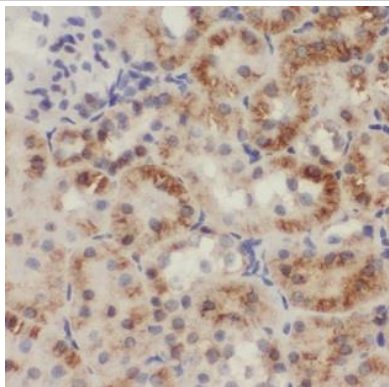
Immunogen:	Indian hedgehog homolog(Drosophila)
Synonyms:	None
Observed MW:	45 kDa
Uniprot ID :	Q14623

Application

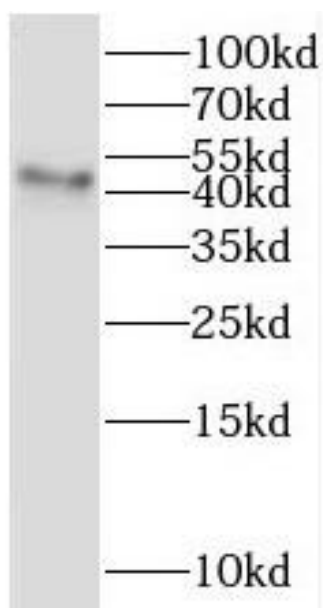
Reactivity:	Human, Mouse, Rat
Tested Application:	ELISA, WB, IHC
Recommended dilution:	WB: 1:500-1:2000; IHC: 1:20-1:200
Image:	

This Antibody is for Research Use Only. Not for Diagnostic Procedures.

This is a sample Antibody manual only. Always refer to the hard copy manual included in the Antibody for your experiment.



Immunohistochemistry of paraffin-embedded human kidney tissue slide using CAF50172(IHH Antibody) at dilution of 1:200



human kidney tissue were subjected to SDS PAGE followed by western blot with CAF50172(IHH antibody) at dilution of 1:500