

## anti- GM-CSF antibody

### Product Information

|               |   |
|---------------|---|
| Catalog No.:  | CAF50138  |
| Size:         | 100µg   |
| Form:         | liquid  |
| Purification: | Immunogen affinity purified   |
| Purity:       | ≥95% as determined by SDS-PAGE  |
| Host:         | Rabbit  |
| Clonality:    | polyclonal  |
| Clone ID:     | None  |
| IsoType:      | IgG   |
| Storage:      | PBS with 0.02% sodium azide and 50% glycerol pH 7.3, -20°C for 12 months (Avoid repeated freeze / thaw cycles.) |

### Immunogen information

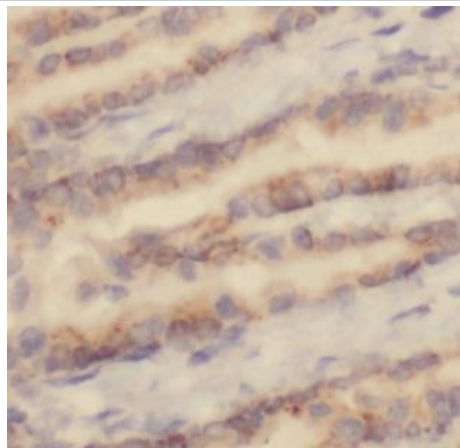
|              |   |
|--------------|---|
| Immunogen:   | colony stimulating factor 2   |
| Synonyms:    | Colony stimulating factor, CSF, CSF2, GM CSF, GMCSF, Molgramostin, Sargramostim |
| Observed MW: | 22 kDa  |
| Uniprot ID : | P04141  |

### Application

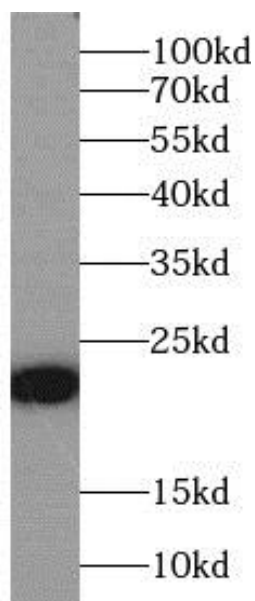
|                       |                                   |
|-----------------------|-----------------------------------|
| Reactivity:           | Human, Mouse, Rat                 |
| Tested Application:   | ELISA, WB, IHC                    |
| Recommended dilution: | WB: 1:500-1:2000; IHC: 1:20-1:200 |
| Image:                |                                   |

**This Antibody is for Research Use Only. Not for Diagnostic Procedures.**

This is a sample Antibody manual only. Always refer to the hard copy manual included in the Antibody for your experiment.



Immunohistochemistry of paraffin-embedded human lung using CAF50138(CSF2 antibody) at dilution of 1:100



RAW264.7 cells were subjected to SDS PAGE followed by western blot with CAF50138(CSF2 antibody) at dilution of 1:1000

SAMPLE

**This Antibody is for Research Use Only. Not for Diagnostic Procedures.**

This is a sample Antibody manual only. Always refer to the hard copy manual included in the Antibody for your experiment.