

anti- Alpha galactosidase A antibody

Product Information

Catalog No.:	CAF50025
Size:	100µg
Form:	liquid
Purification:	Immunogen affinity purified
Purity:	≥95% as determined by SDS-PAGE
Host:	Rabbit
Clonality:	polyclonal
Clone ID:	None
IsoType:	IgG
Storage:	PBS with 0.02% sodium azide and 50% glycerol pH 7.3, -20°C for 12 months (Avoid repeated freeze / thaw cycles.)

Background

GLA, also named as Melibiase, Agalsidas and Alpha-galactosidase A, Belongs to the glycosyl hydrolase 27 family. It hydrolysis of terminal, non-reducing alpha-D-galactose residues in alpha-D-galactosides, including galactose oligosaccharides, galactomannans and galactolipids. Fabry disease is an X-linked lysosomal storage disorder resulting from the deficient activity of GLA. Enzyme replacement therapy(ERT) with GLA is currently the most effective therapeutic strategy for patients with Fabry disease, a lysosomal storage disease.

Immunogen information

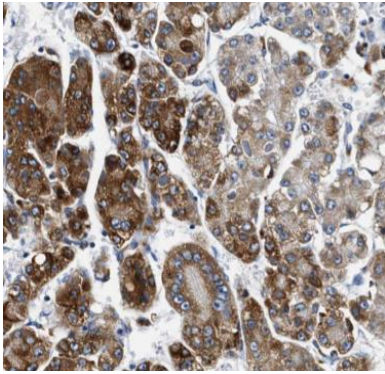
Immunogen:	galactosidase, alpha
Synonyms:	Alpha galactosidase A, galactosidase, alpha
Observed MW:	49 kDa
Uniprot ID :	P06280

Application

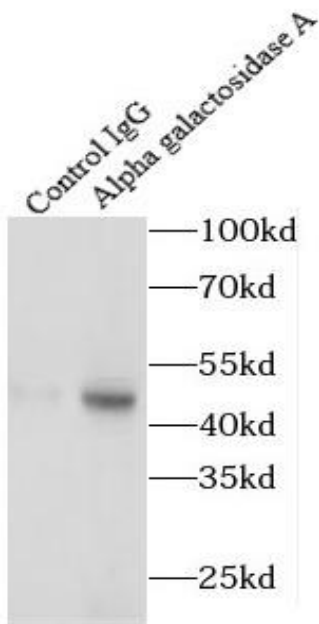
Reactivity:	Human, Mouse, Rat
Tested Application:	ELISA, IHC, IP, WB
Recommended dilution:	WB: 1:500-1:5000; IHC: 1:20-1:200; IP: 1:500-1:5000
Image:	

This Antibody is for Research Use Only. Not for Diagnostic Procedures.

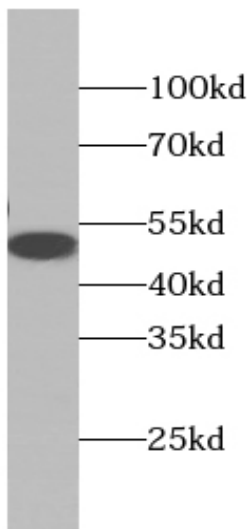
This is a sample Antibody manual only. Always refer to the hard copy manual included in the Antibody for your experiment.



Immunohistochemistry of paraffin-embedded human liver cancer tissue slide using CAF50025(GLA antibody) at dilution of 1:50



IP Result of anti-Alpha galactosidase A (IP:CAF50025, 3ug; Detection:CAF50025 1:1000) with HEK-293 cells lysate 1800ug.



HeLa cells were subjected to SDS PAGE followed by western blot with CAF50025(GLA antibody) at dilution of 1:1000

This Antibody is for Research Use Only. Not for Diagnostic Procedures.

This is a sample Antibody manual only. Always refer to the hard copy manual included in the Antibody for your experiment.